

A photograph of a coastal landscape. In the foreground, a sandy path with patches of dry grass and small puddles leads towards the horizon. The sky is filled with soft, grey clouds, suggesting an overcast day. The overall tone is muted and naturalistic.

# Outer Dowsing Offshore Wind

## Environmental Statement

### Chapter 12 Offshore and Intertidal Ornithology

#### Volume 2 Figures

Document Reference: 6.2.12  
Pursuant to APFP Regulation:5(2)(a)  
Revision:3.0



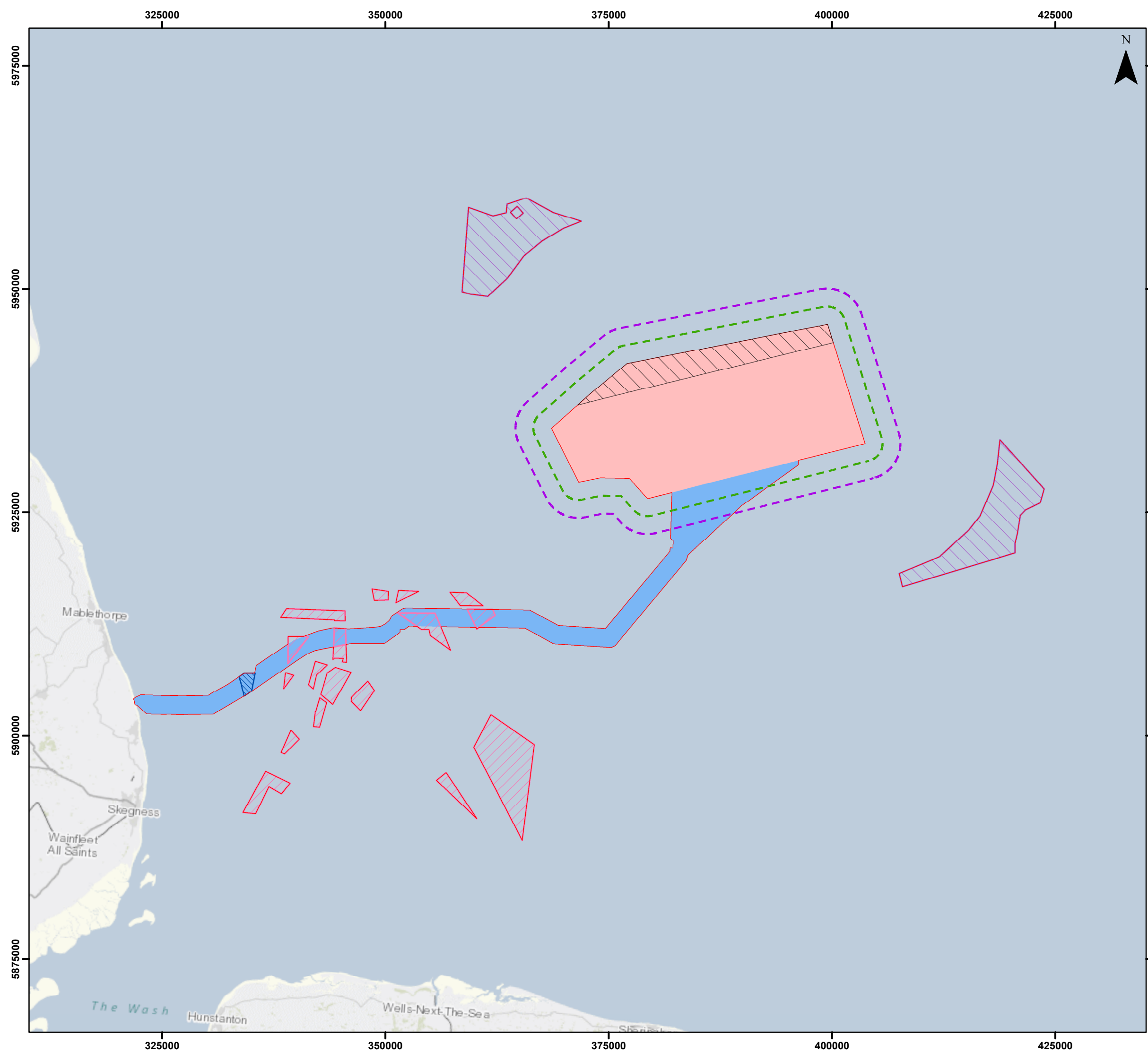
Company:		Outer Dowsing Offshore Wind		Asset:		Whole Asset	
Project:		Whole Wind Farm		Sub Project/Package:		Whole Asset	
Document Title or Description:		Chapter 12 Offshore and Intertidal Ornithology					
Internal Document Number:		PP1-ODOW-DEV-CS-REP-0120_02		3 <sup>rd</sup> Party Doc No (If applicable):		N/A	
Rev No.	Date	Status / Reason for Issue	Author	Checked by	Reviewed by	Approved by	
01	March 2024	DCO Application	GoBe	GoBe	Shepherd & Wedderburn	Outer Dowsing	
02	February 2025	Examination ES Update	GoBe	GoBe	Shepherd & Wedderburn	Outer Dowsing	

## Change Log

- Examination Update: updates to reflect, where relevant: clarifications to date in Examination; correcting errata; additional commitments made through Examination; and changes to status of or addition of cumulative projects.

## Table of Figures

- Figure 12.1 Ornithological Study Area for the Project (document reference 6.2.12.1)
- Figure 12.2 Density of Red-throated Diver in the Northern Section of the Outer Thames Estuary SPA in comparison to Anthropogenic Structures (6.2.12.2)
- Figure 12.3 Density of Red-throated Diver in the Southern Section of the Outer Thames Estuary SPA in comparison to Anthropogenic Structures (6.2.12.3)
- Figure 12.4 ORCP and ECC in relation to surrounding OWFs (6.2.12.4)



### Legend

- Offshore Order Limits
- Array Area
- Offshore Restricted Build Area
- Offshore Export Cable Corridor
- ORCP Area
- Artificial Nesting Structure Area
- Biogenic Reef Restoration Area
- 2km Buffer from Array Area
- 4km Buffer from Array Area

Coordinate System: WGS 1984 UTM Zone 31N

0 10 20 km

Scale: 1:400,000

A3 Page Size

Environmental Statement Version 2 Deadline 4a

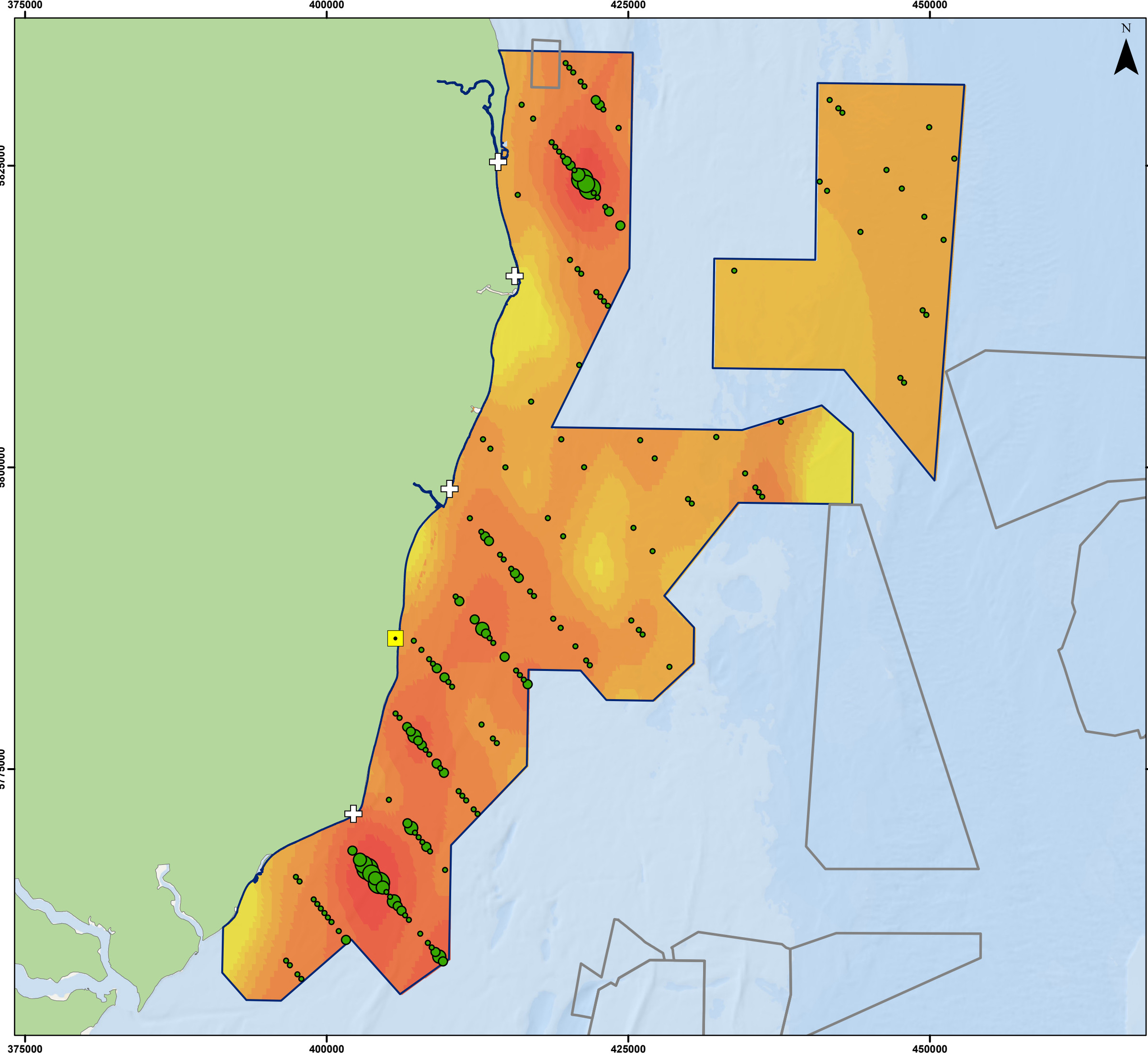
Ornithological Study Area for the Project

Figure 12.1

Date: 18/02/2025  
Produced By: BPHB  
Revision: 2.0

Contains ESRI Basemapping;  
Contains OS data © Crown  
Copyright and database right  
2020

Document Path: Z:\GIS\GIS Projects\0152 Outer Dowsing EIA\GIS\Figures\Deadline 5\Introduction\ODOW\_0152\_Fig12.1 Offshore\_Order\_Limits\_v2.mxd



### Legend

- Outer Thames SPA
- Offshore Wind Farm Boundaries
- Sizewell Nuclear Power Station
- Lighthouse

**Red-throated Divers Count (2018) (Jenks) (Irwin *et al.*, 2019)**

- 1 - 2
- 3 - 5
- 6 - 10
- 11 - 15
- 16 - 20

**Bird Densities (birds per km<sup>2</sup>)**

- 0.01 - 0.1
- 0.11 - 0.2
- 0.21 - 0.5
- 0.51 - 1
- 1.01 - 2
- 2.01 - 5
- 5.01 - 10
- 10.01 - 20
- 20.01 - 50

Coordinate System: WGS 1984 UTM Zone 31N

Scale: 1:300,000

A3 Page Size

Environmental Statement Version 2 Deadline 4a

Density of Red-throated Diver in the Northern Section of the Outer Thames Estuary SPA in comparison to Anthropogenic Structures

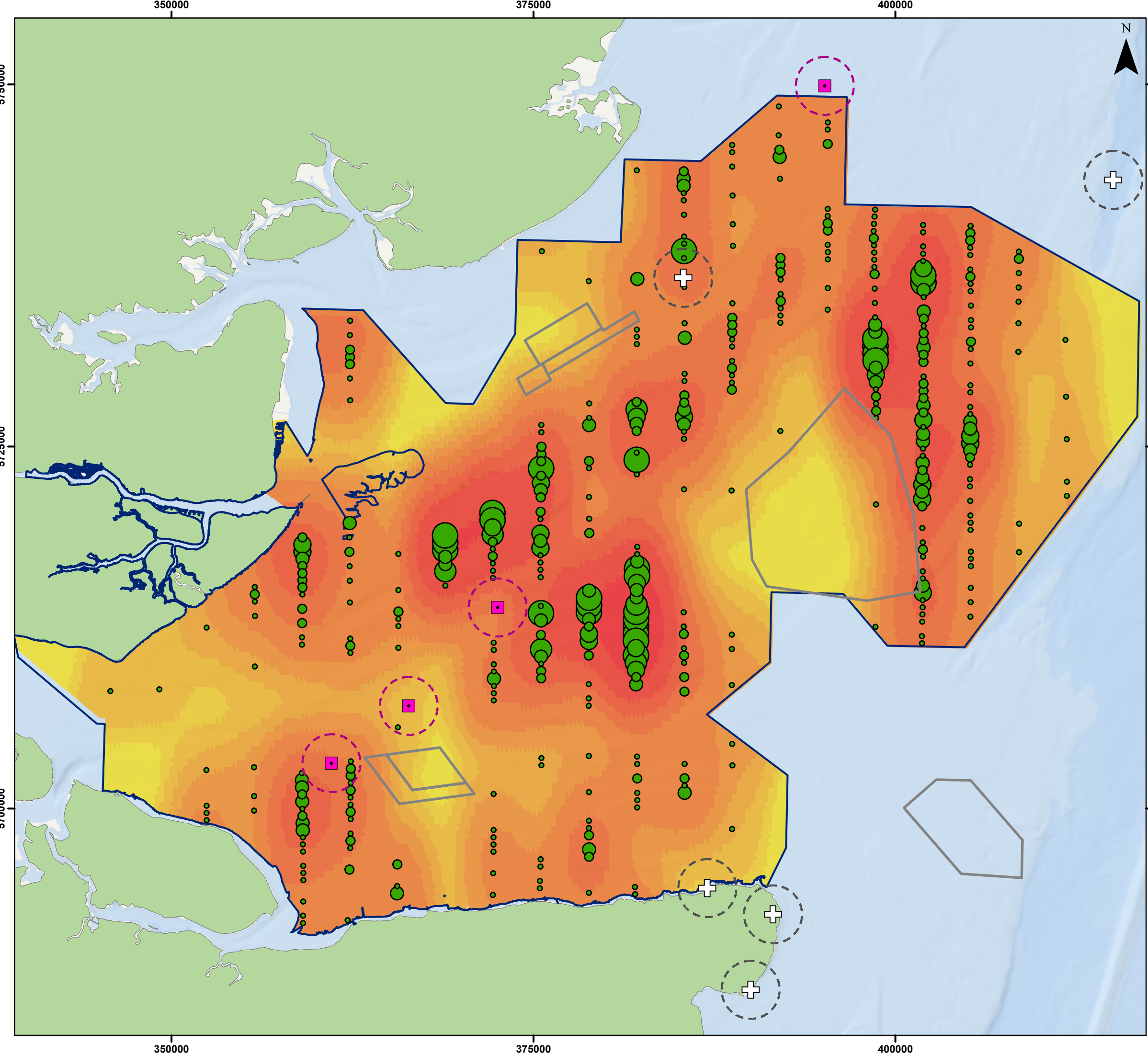
Figure 12.2

Date: 18/02/2025  
Produced By: BPHB  
Revision: 2.0

Contains ESRI Basemapping; Esri, Garmin, GEBCO, NOAA NGDC, and other contributors

Document Path: Z:\GIS\GIS\_Productions\0152 Outer Dowsing EIA\GIS\Figures\Deadline 4a\Ornithology\ODOW\_0152\_ORN\_Fig12.2\_RedThroated\_Diver\_Density\_OuterThamesSPA\_North\_v2.mxd





### Legend

- Outer Thames SPA
- Offshore Wind Farm Boundaries
- Offshore Military Fort
- 2km Buffer from Offshore Military Fort
- Lighthouse
- 2km Buffer from Lighthouse

#### Red-throated Divers Count (2018) (Jenks) (Irwin *et al.*, 2019)

- 1 - 2
- 3 - 5
- 6 - 10
- 11 - 15
- 16 - 20
- 21 - 84

#### Bird Densities (birds per km<sup>2</sup>)

0
0.01 - 0.1
0.11 - 0.2
0.21 - 0.5
0.51 - 1
1.01 - 2
2.01 - 5
5.01 - 10
10.01 - 20
20.01 - 50
> 50

Coordinate System: WGS 1984 UTM Zone 31N

0 5 10 km

Scale: 1:250,000

A3 Page Size

Environmental Statement Version 2 Deadline 4a

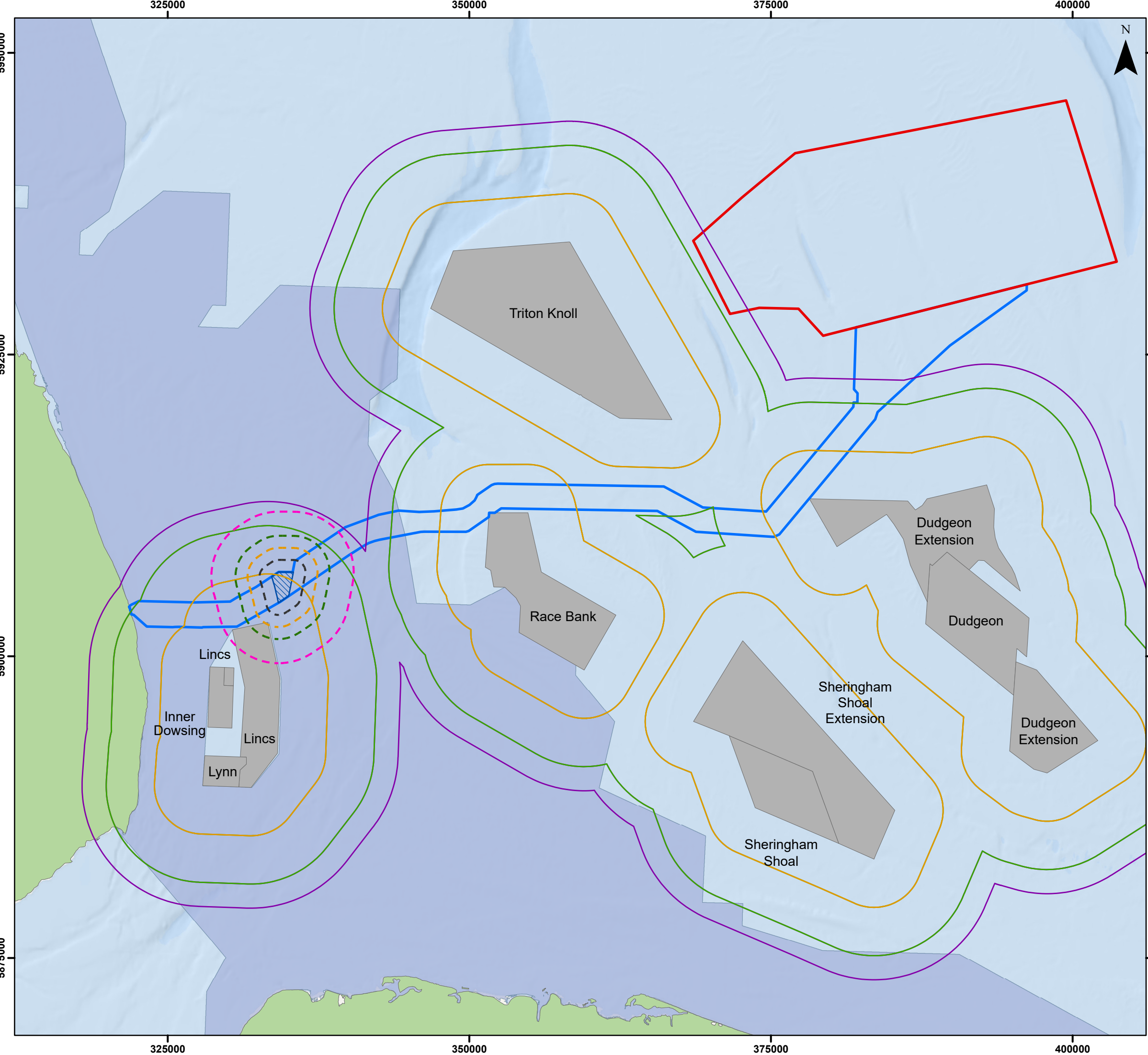
Density of Red-throated Diver in the Southern Section of the Outer Thames Estuary SPA in comparison to Anthropogenic Structures

Figure 12.3

Date: 18/02/2025  
Produced By: BPHB  
Revision: 2.0

Contains ESRI Basemapping;  
Esri, Garmin, GEBCO, NOAA  
NGDC, and other contributors

Document Path: Z:\GIS\GIS\_Productions\0152 Outer Dowsing EIA\GIS\Figures\Deadline 4a\Ornithology\ODOW\_0152\_ORN\_Fig12.3\_RedThroated\_Diver\_Density\_OutThamesSPA\_South\_v2.mxd



### Legend

- Array Area
- Offshore Export Cable Corridor
- ORCP Area
- 1km Buffer from ORCP Area
- 2km Buffer from ORCP Area
- 3km Buffer from ORCP Area
- 5km Buffer from ORCP Area
- Offshore Wind Farm
- 4km Buffer from OWFs
- 8km Buffer from OWFs
- 10km Buffer from OWFs
- Greater Wash Special Protection Area

Coordinate System: WGS 1984 UTM Zone 31N

0 10 20 km

Scale: 1:300,000

A3 Page Size

Environmental Statement Version 2 Deadline 4a

ORCP and Lincs OWF

Figure 12.4

Date: 18/02/2025  
Produced By: BPHB  
Revision: 2.0

Contains ESRI Basemapping;  
Esri, Garmin, GEBCO, NOAA  
NGDC, and other contributors

Document Path: Z:\GIS\GIS - Projects\0152 Outer Dowsing EIA\GIS\Figures\Deadline 4a\Orthology\ODOW\_0152\_ORN\_Fig12.4\_ORCP\_Lincs\_v2.mxd